



Slim DVD Recorder Installation

Box Includes

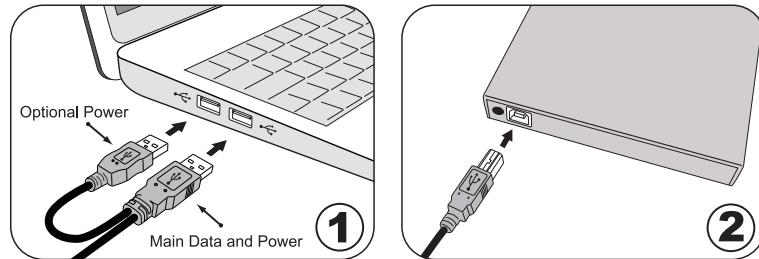
- (1) I/O Magic Slim DVD Recorder
- (1) USB Y-Cable
- (1) This Install Guide
- (1) NTI Media Maker 8 Disc with Digital FliX Trial

System Requirements

Windows 7 / Vista / XP



Follow these simple steps when connecting your device:



1. Plug each of the USB Y-Cable ends into available USB ports on your laptop, Netbook or PC.

2. Plug the single end of the USB Y-Cable into the back of the Slim DVD Recorder.

Windows will automatically detect your new device and assign it a new drive letter.

Please be patient while the computer detects the new device.

If the computer does not assign a new drive letter for your Slim DVD Recorder, read the Troubleshooting section of this guide.



Some laptops and computers can power the device using only one USB port. In this configuration, please use the Main Data and Power USB plug.

Use both USB plugs if you experience any problems connecting to the device.

NTI Installation

Media Maker 8 allows you to easily create CDs and DVDs. Digital FliX allows you to watch movies and listen to music. These applications are NOT required to use your DVD Recorder. You are welcome to use your choice of any compatible burning and media playback software, including software you already have installed on your computer or that is included in Windows.

Requirements: Windows 7 / Vista / XP

Installing NTI Media Maker

1. Insert the NTI CD into your Slim DVD Recorder.
2. The setup wizard should appear. If the setup wizard does not appear, click on My Computer, and browse to your new Slim DVD Recorder containing your NTI CD. Double click "Install.exe" on the CD to begin installation.
3. Select "Media Maker 8" from the installation window.
4. Follow the on-screen instructions to complete installation.



NTI Digital FliX is NOT required for your Slim DVD Recorder to function. Any compatible media playback software may be used.

Installing Digital FliX

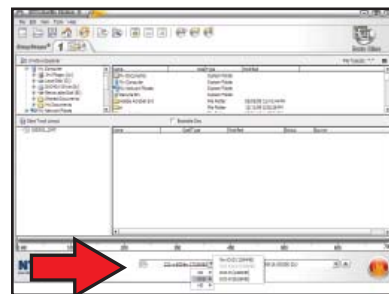
1. Insert the NTI CD into your Slim DVD Recorder.
2. The setup wizard should appear. If the setup wizard does not appear, click on My Computer, and browse to your new Slim DVD Recorder containing your NTI CD. Double click "Install.exe" on the CD to begin installation.
3. Select "Digital FliX Trial" from the installation window.
4. Follow the on-screen instructions to complete installation.

Using NTI Media Maker

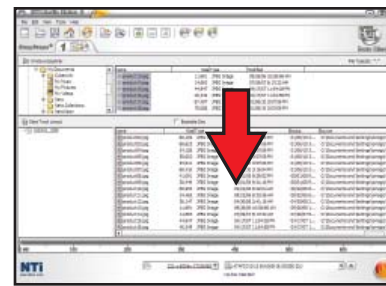
Burn Data CD or DVD



1. Click on the NTI Media Maker 8 icon on your desktop.
2. Click on the "Data" button.
3. Click on the "Data Disc" button. This will launch the file selection screen.



4. Select the type of disc you would like to burn from the drop down menu on the bottom of the screen.



Copying a CD or DVD



1. Click on the NTI Media Maker 8 icon on your desktop.
2. Click on the "Backup" button.



3. Click on the "Copy" button.

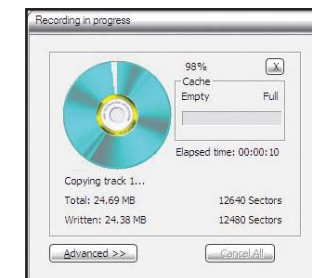
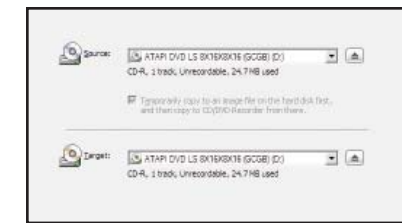
5. Use the file browser on the top of the screen to find the files you want to burn. Drag and drop the files you want to the bottom of the screen.

6. Click the burn button at the bottom right of the screen to begin burning. A window will appear with the current write settings.

7. Click "Start" to begin the burning process.

8. When prompted, insert a blank CD or DVD into the Slim DVD Recorder.

9. The software will indicate that the burn was successful when finished.



4. Choose your source and target drives.
5. Insert the original disc into the Slim DVD Recorder.

6. Click the burn button at the bottom right of the screen to begin burning. A window will appear with the current write settings.

7. Click "Start" to begin the burning process.

8. This screen will display the status of the copy process.

9. When prompted, insert a blank CD or DVD into the Slim DVD Recorder.

10. The software will indicate that the copy was successful when finished.

Need More Assistance?

I/O Magic Support

Visit our web site at:

<http://www.iomagic.com>

and click "Support" then LiveChat.

Call our Technical Support Hotline at:

1-949-707-4888 • M-F 8am - 5pm PT.

NTI Media Maker & Digital FliX

For help with NTI's Media Maker or Digital FliX software, please visit:

<http://www.ntius.com>

Technical Support Hotline:

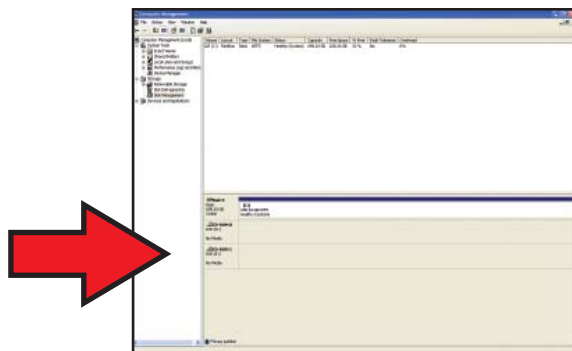
1-949-421-0712 • M-F 9am - 6pm PT.

Troubleshooting

Slim DVD Recorder is not recognized by computer.

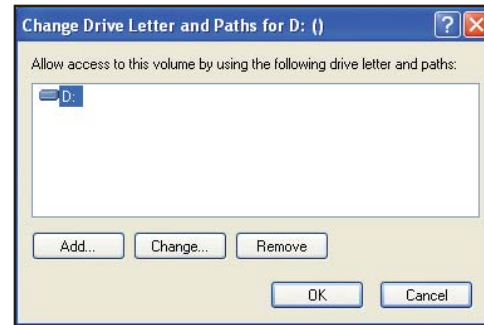
- Please ensure that both ends of your USB Y-Cable are connected directly to your computer.
 - Do not connect your USB Y-Cable to a USB Hub.
 - If you are having problems connecting to a Desktop Computer, please connect your USB Y-Cable to the back of your computer – not to the USB ports on the front.
- Is this Slim DVD Recorder a replacement drive?
 - If you are experiencing the same problem as the drive you replaced, then there is a software or hardware issue with your computer. Please contact your computer manufacturer or contact our LiveChat support by going to www.iomagic.com and clicking on Support, then LiveChat or call our Technical Support Hotline at 1-949-707-4888, M-F, 8am-5pm PT.

- Does your computer indicate that the Slim DVD Recorder has been installed successfully, but is not listed in Computer (or “My Computer”)?
 - Please ensure that your computer has assigned your Slim DVD Recorder a drive letter and that it is not conflicting with any previously used drive letters.
- To check/change your drive letter, follow these instructions:
 - 1 Using your right mouse button, click on Computer(or “My Computer”).
 - 2 In the dialog box that appears, click on Manage with your left mouse button.
 - 3 On the left-hand side of the screen, click on Disk Management, beneath Storage.
 - 4 Locate your new Slim DVD Recorder - It will be labeled “CD-ROM” and then a number. If you have multiple optical drives in your computer, it will usually be the last drive listed.



- 5 Using your right mouse button, click on the Slim DVD Recorder.
- 6 With your left mouse button, click on “Change Drive Letter and Paths...”
- 7 If your computer has already assigned it a drive letter, click “Change...”

- 8 If it has not assigned it a drive letter, click “Add...”
- 9 On the following screen, choose a new drive letter and click “OK”.



- Check in Computer (or “My Computer”) for your Slim DVD Recorder. If it is not listed, or if you have any questions please contact our LiveChat support by going to www.iomagic.com and clicking on Support, then LiveChat or call our Technical Support Hotline at 1-949-707-4888, M-F, 8am-5pm PT.

Slim DVD Recorder won't play DVD movies.

- DVD movies require software and DVD decoding software (also known as “codecs”) to play. Windows comes pre-installed with a media playback software called Windows Media Player that can play DVD movies, but depending on your version of Windows, you may need to download and install “codecs” for DVD movies to play properly.
- For your convenience, we have included a trial version of NTI's Digital FliX. Digital FliX is a media playback software that plays DVD movies. Follow the installation instructions in this guide to install Digital FliX. Digital FliX is not required to use your Slim DVD Recorder – any compatible media playback software may be used. If you are having problems watching DVD movies with the Digital FliX software, contact them by visiting their website at www.ntius.com or call their Support Hotline at 1-949-421-0712, M-F 9am-6pm PT.

The disc tray does not open when you press the eject button.

- Are both ends of the USB Y-Cable connected to your computer?
 - Please ensure that both ends of your USB Y-Cable are connected directly to your computer.
- Is the Slim DVD Recorder currently in use?
 - If your Slim DVD Recorder is in use by software on your computer, it may not eject when you press the eject button. In such cases, follow the steps in the software window to eject the disc or quit the software that is accessing the Slim DVD Recorder prior to pressing the eject button.
- Is there a disc stuck in the Slim DVD Recorder?
 - Unplug the Slim DVD Recorder from your computer and manually remove the disc by using a small pin or paper clip as a

tool. Insert the pin into the forced ejection hole on the front panel of the Slim DVD Recorder and push gently. When the drive tray opens, gently pull it the rest of the way out.

- If the disc tray is caught in the Slim DVD Recorder and does not come out, or if it cannot be opened or closed using the eject button after it is pulled out manually, contact our LiveChat support by going to www.iomagic.com and clicking on Support, then LiveChat or call our Technical Support Hotline at 1-949-707-4888, M-F, 8am-5pm PT.

The disc is ejected after inserting a disc.

- Make sure the disc is set properly and close the disc tray.
- Remove dust or dirt from the disc using an air spray or a dry soft cloth. Wipe the bottom of the disc gently from the center perpendicular to the edge of the disc.
- If a specific disc is repeatedly ejected, the disc itself may be damaged or deformed.

No data can be read from a disc.

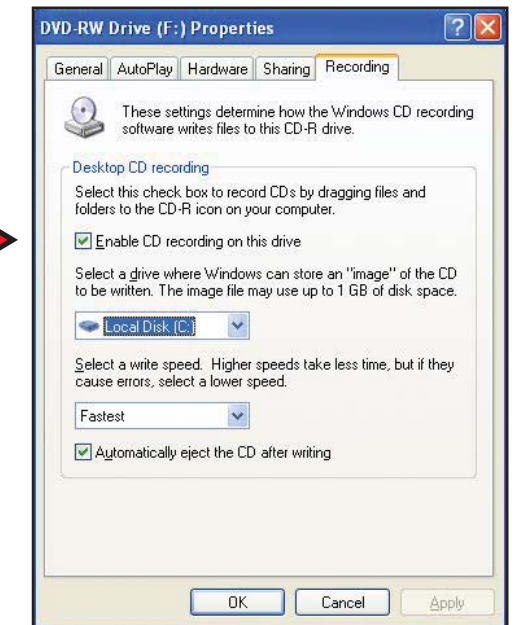
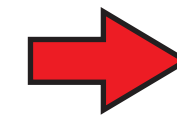
- Is the disc ejected without any instructions or explanations?
 - Refer to the section above labeled “The disc is ejected after inserting a disc.”
- Is the disc usable with the Slim DVD Recorder?
 - Be sure that you are using a compatible disc.
- Is the disc dusty or dirty?
 - Remove dust or dirt from the disc using an air spray or a dry soft cloth. Wipe the bottom of the disc gently from the center perpendicular to the edge of the disc.
- Can data be read from other discs (audio CD, CD-ROM, etc.)?
 - If no data can be read from a specific disc, data may be written in a format that the Slim DVD Recorder cannot recognize, or the disc itself may be damaged or deformed. Note that no data can be read from a blank disc.

No data can be written to a CD.

- Is the disc blank?
 - To write data to a CD, the CD must be blank or you must have chosen to leave it “open” with a CD/DVD writing software.
- Are you receiving an error from Windows that says “Drive is not accessible. Incorrect Function”?
 - Please ensure that CD Recording for the Slim DVD Recorder is enabled in Windows.

- To enable CD recording, follow these instructions:

- Open “My Computer” (or “Computer”)
- Click on the Slim DVD Recorder with your right mouse button, and choose Properties.
- Click on the Recording tab at the top of the Properties Window.
- Place a check in the box next to “Enable CD recording on this drive.”



No data can be written to a DVD.

- Have you installed CD/DVD writing software on your computer?
 - Many computers require extra software in order to write data onto DVDs. For your convenience, we have included writing software with your Slim DVD Recorder, though you may use your choice of any compatible writing software.
- Is the disc blank?
 - In order to write data to a DVD, the DVD must be blank or you must have chosen to leave it “open” with your CD/DVD writing software.

The playback of an audio CD (CD-DA) is inaudible.

- Check that the system volume is not set to the minimum level or is muted.

Is more than one CD/DVD writing software installed on your computer?

- Installing more than one writing software on a computer may cause instability. Writing software must support the Slim DVD Recorder in order to recognize it. Contact the manufacturer of your CD/DVD writing software to see whether the software supports the Slim DVD Recorder.